

PLAT NO.	STATE	PROJECT
2	OHIO	

GUERNSEY COUNTY
GUE-21-9.39
LOCATION PLAN

Received October 25 1961 at 10:30
Recorded October 26 - 1961
Plot Book 11 Page 40
Signed Jahn-W-Campbell
Recorder, Guernsey County, Ohio
Fee 3.00

Note: This Instrument prepared by the
Dept. of Hwys. under the Supervision
of Harry R. Brannon, P.E. No 15394.
Signed Harry R. Brannon
Registered Surveyor No 2694.
Resident Division Deputy Director
Date: Oct 22-1961

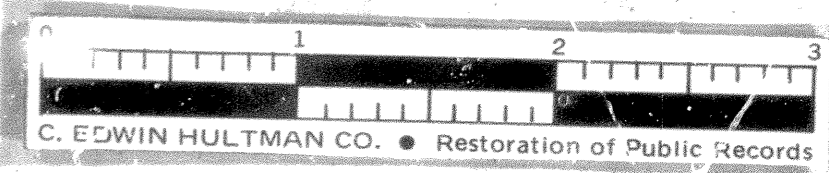
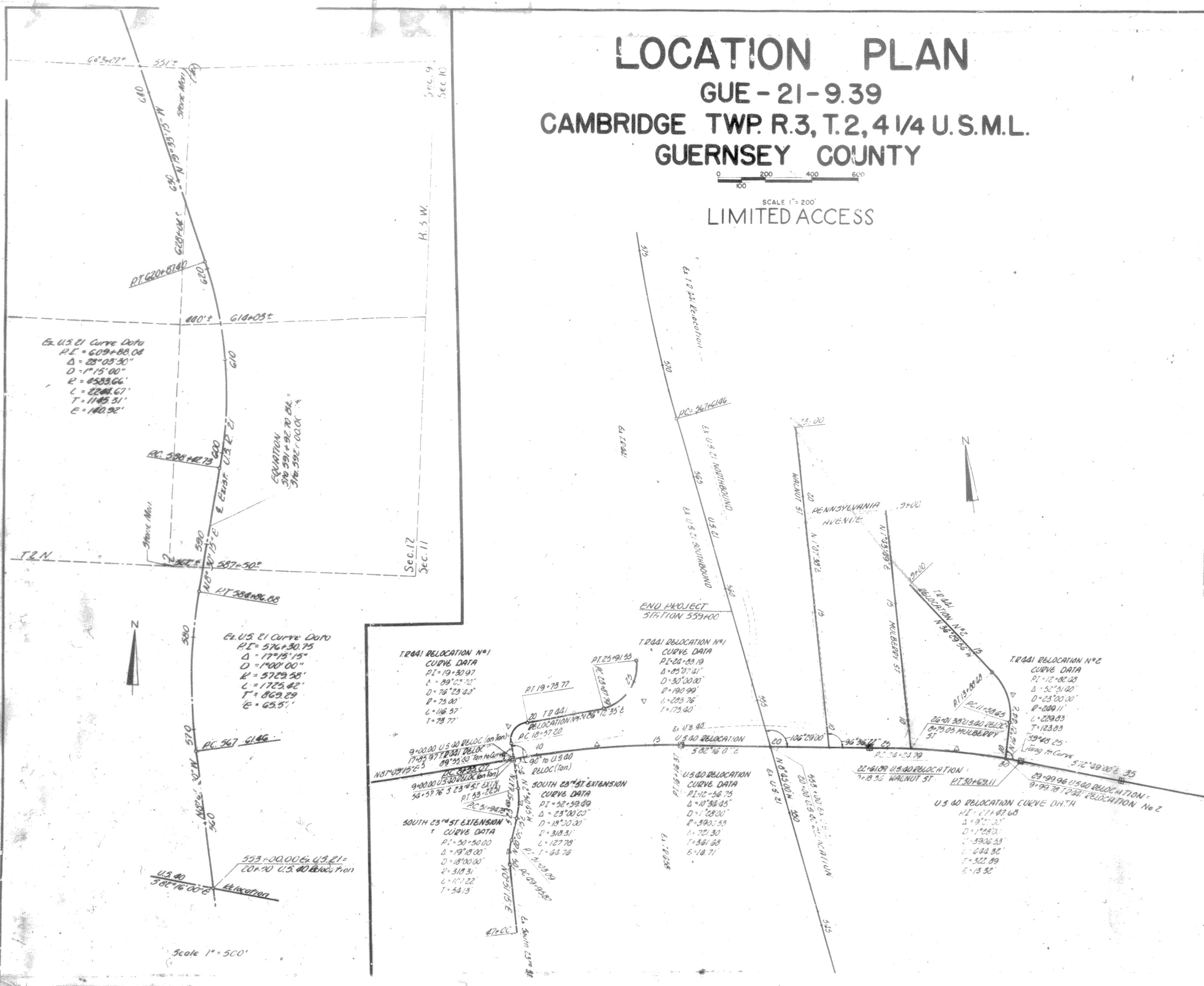
This improvement has been declared a Limited Access
Highway from Station 7+00.00 to Station 35+00.00 U.S. 40 Reloc. by
action of the Director of Highways and recorded in
Volume 41, Page 891, of the Director's Journal
Pursuant to Law.

LOCATION PLAN

GUE-21-9.39
CAMBRIDGE TWP. R.3, T.2, 4 1/4 U.S.M.L.
GUERNSEY COUNTY



SCALE 1" = 200'
LIMITED ACCESS



Monument assemblies shall be set in the center of the median or pavement at the following locations on U.S. 40 Relocation.

Point Referenced	Station
P.C.	21+25.07
P.T.	16+16.37
P.C.	22+26.79
P.T.	30+69.11
P.O.T.	35+00.00

Note: Top of Monument assembly to be flush with surface of pavement or median pavement.
□ Monument Assembly Symbol

Note: This Plat voids and supersedes parts of Sheets 1, 3 & 5 of the Location Plan for GUE-21-10.45 as recorded in Book 11, Pages 8, 10 & 12 of the Guernsey Co. Plat Records.

Reference is hereby made to the Location Plans for GUE-21-5.90 recorded in book 10, page 48 and for GUE-21-10.94 recorded in Book 11, Page 33 of the Guernsey Co. Plat Records, to both of which this Plat is Supplemental.

Scale 1" = 500'